


## Download from dive computer

This feature is used to extract (copy) dive information from the dive computer.

- 1) Select Dive, Dive Details, Location, Gear, or Buddies on the left menu bar. Click at the "+" button  from the top menu bar (Figure 1)

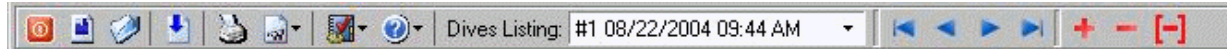


Figure 1

- 2) At the "Add dive options" dialogue box, click at the "Download from Dive Computer" radio button, then select DC model from the drop down list box. Click at the "OK" button to continue (Figure 2).



Figure 2

- 3) At the "Download Dive Data from ..." dialogue box, follow the "Download Instructions" to process the download. (Figure 3)

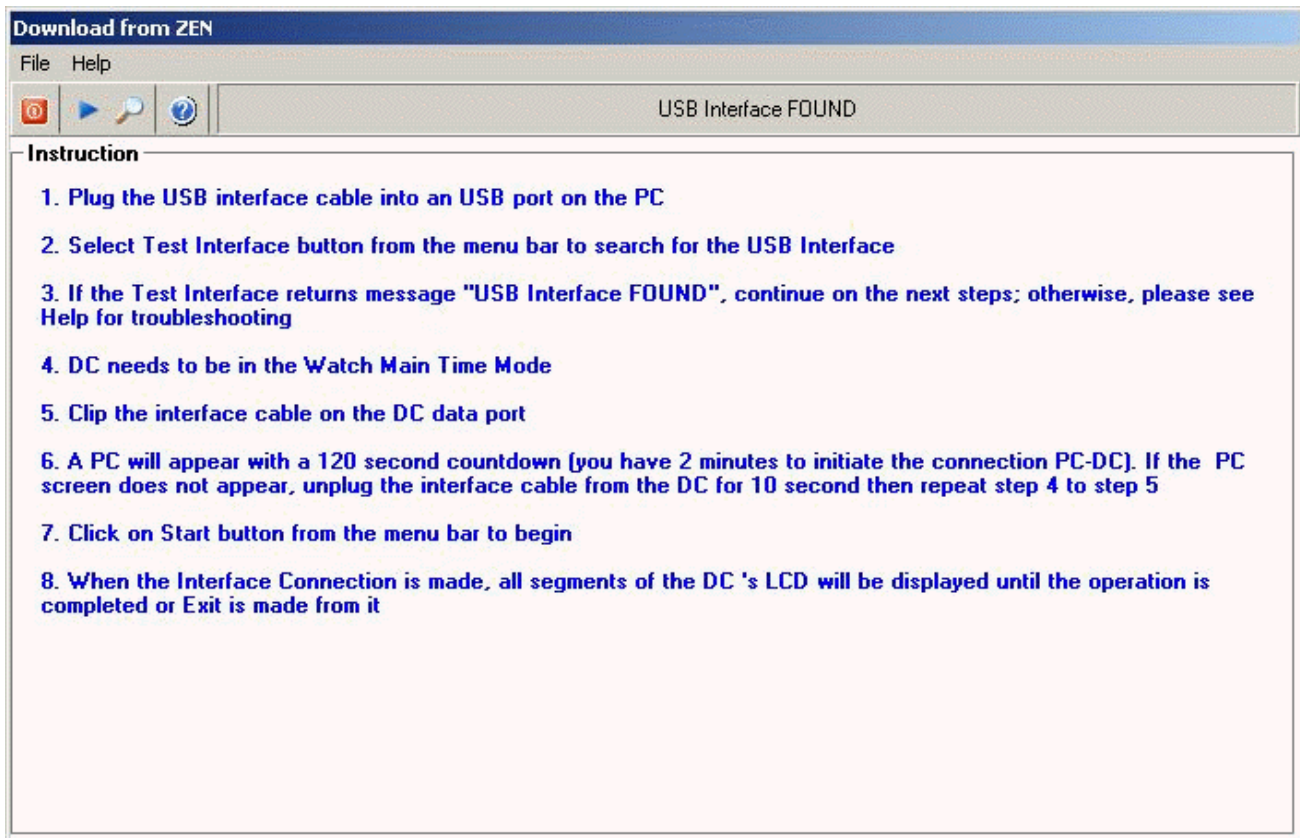


Figure 3

During the download process:

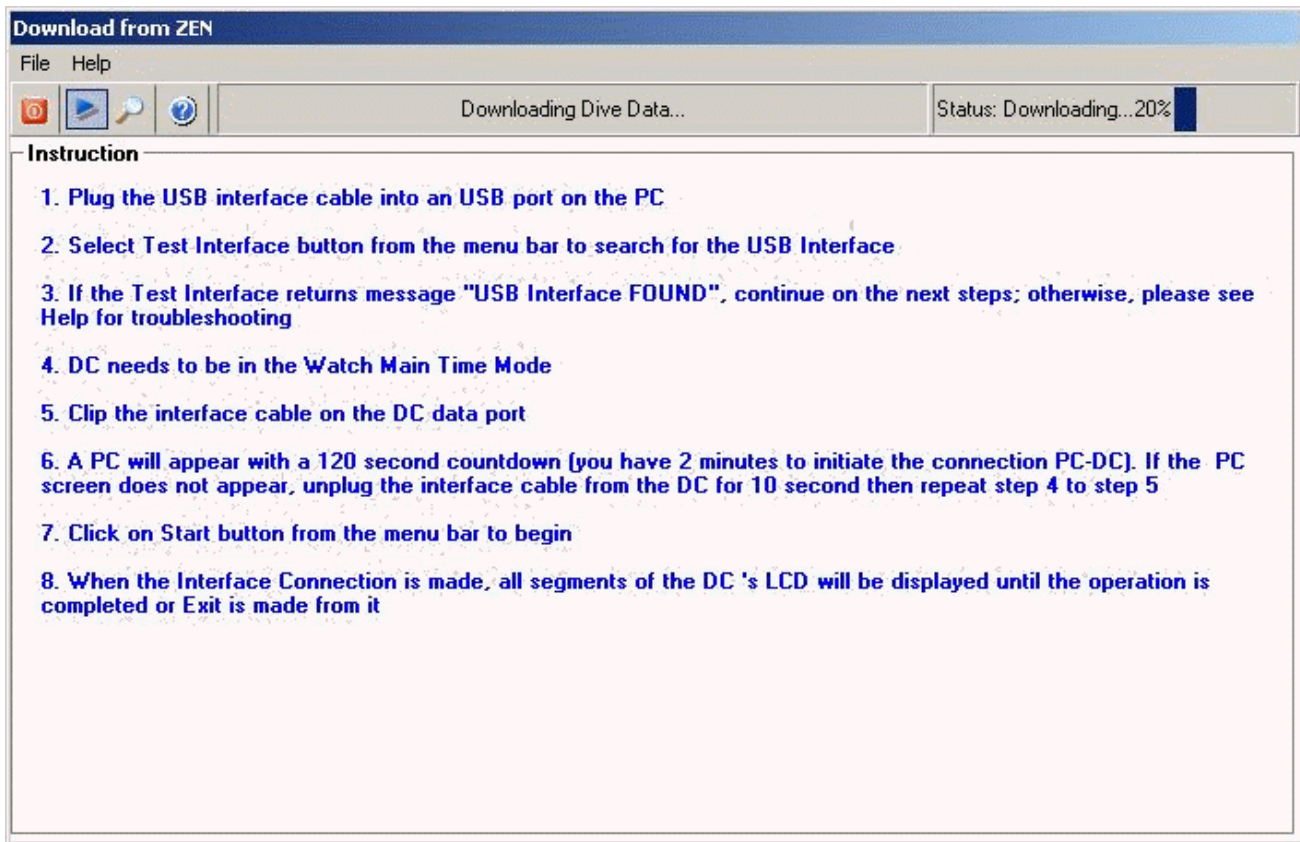
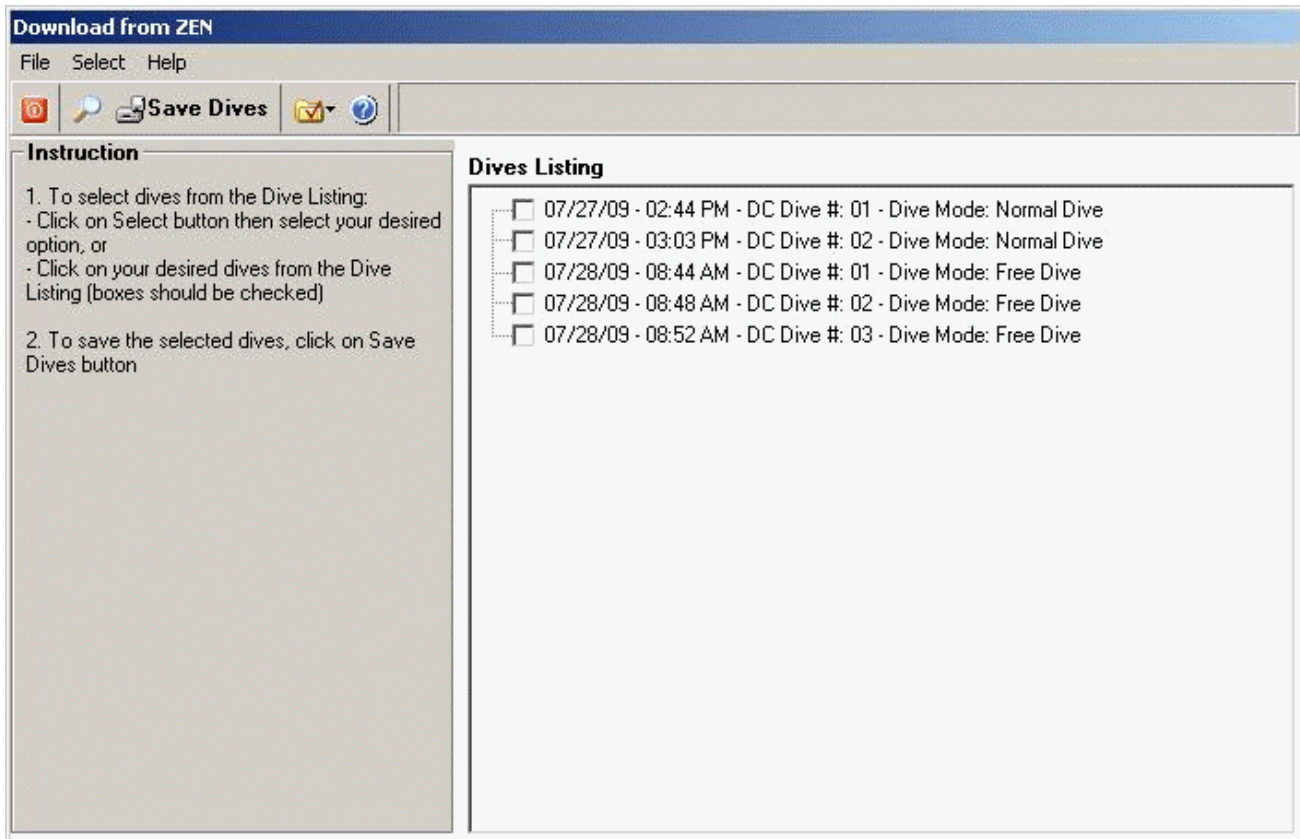


Figure 4

After downloading the dives index, all existing dives from the dive computer will be displayed (Figure 5)



**Figure 5**

Use the "Select " option from the menu bar to select dives you want to save to the Dive Log. You can select (Figure 6):

- New Dives, or
- All Dives, or
- Select any dive from the list

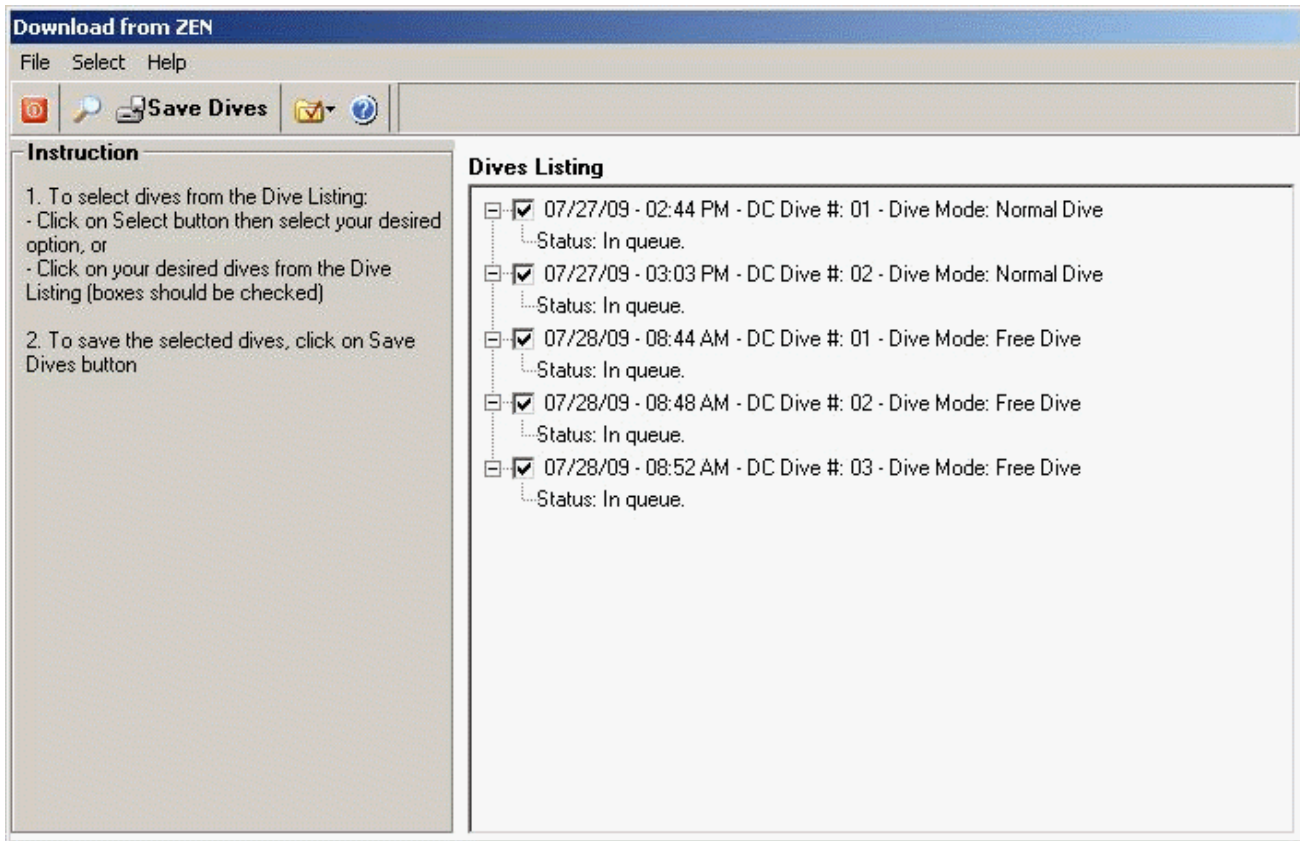


Figure 6

Click on the "Save Dives" button, program will download and save your selected dives to the Dive Log (Figure 7).

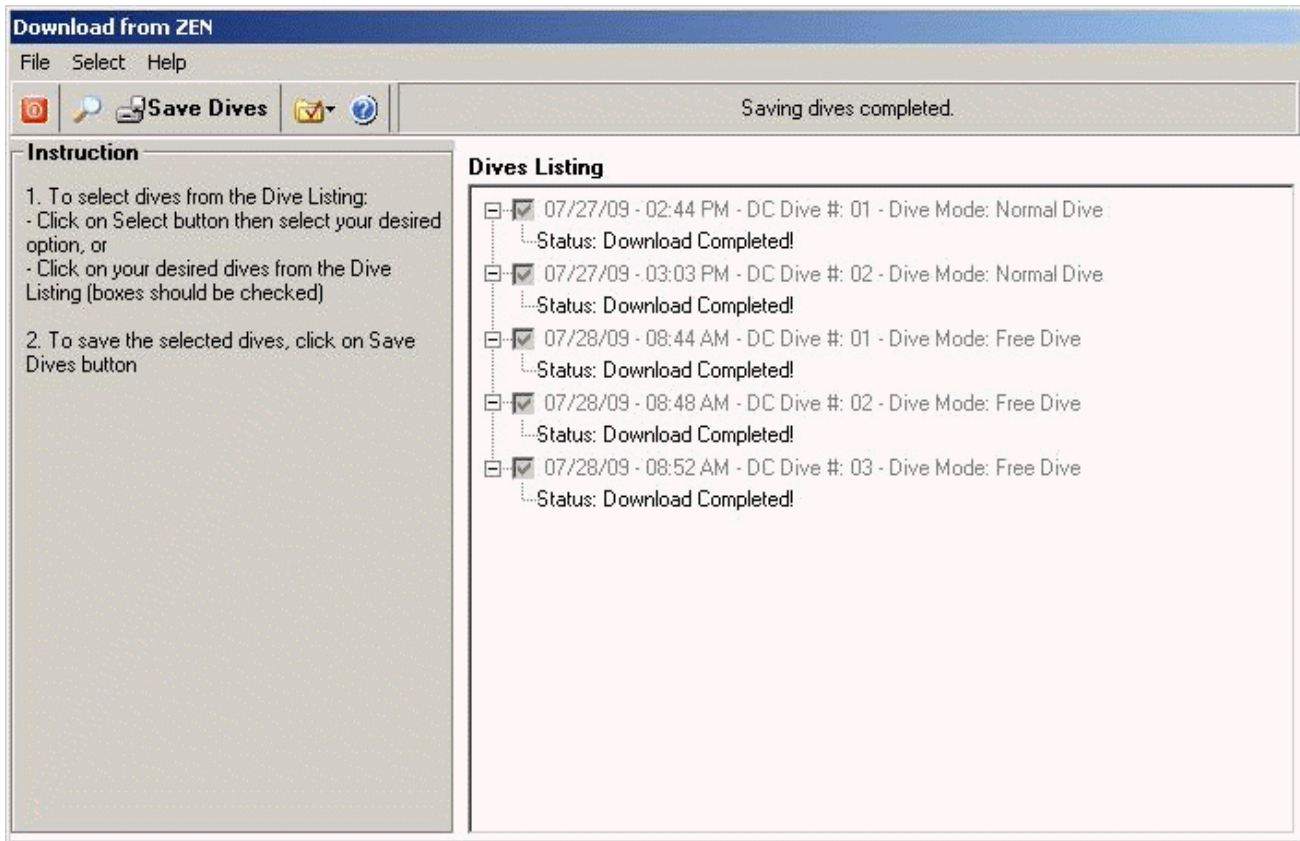


Figure 7

Click on "Close" to exit the "Download Dive Data from..."